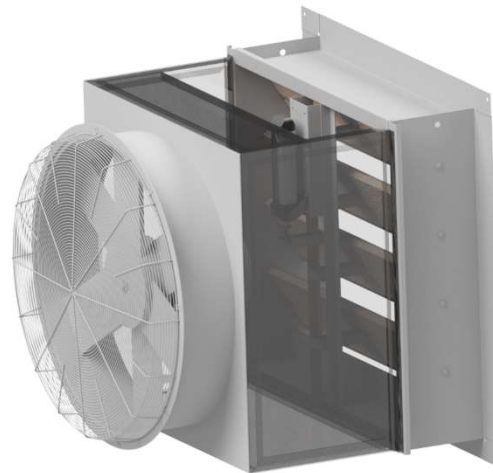


Farm Electronics Ltd.  
 Woodland Drive  
 Alma Park  
 Grantham  
 Lincolnshire  
 NG31 9SR

# FIXED AND MOTORISED LOUVRES AND HATCHES



Farm Electronics Louvre Light & Water filters are manufactured from black PVC waveform light filter cassettes encased in a galvanised steel support frame. Simply fitted directly to the flange of the louvre, the filters will prevent direct sunlight and water from entering through the louvres. Alternatively, we can offer fly netting or rodent guards to cover the louvre or hatch. As can be seen below, we can also offer motorised hatches. These are manufactured from 80mm insulated panel as well as a rubber edging seal to create a fully sealed opening. These come in a variety of sizes, get in touch for more information.



## INSTALLATION

- All orders will be supplied with an bespoke installation drawing showing the clear opening required and the mounting flange size.
- As a standard we usually recommend fitting the louvres and hatches from the outside inwards. There is a large outer flange which sits onto a 50mm steel angle iron frame (not supplied) that it is then secured too along all side of the louvre or hatch.
- If motorised, the actuator comes with the louvre but not fitted to prevent damage. This then needs to be fitted to the back of the louvre or hatch with the fixing supplied. If motorised, there is an electrical connection required between the actuator and the electrical control panel which will control this. Further information can be attained by contacting us using the details at the top of the page.

As can be seen above, one of our popular options is a motorised louvre with an exhaust ventilation fan fitted next to it, from children's indoor play areas to dusty grading lines, these have been used to improve indoor areas where ventilation has been poor or none existent. We can help guide you to what size louvre and what ventilation rate of fan to ensure the right equipment is specified for the right project. Motorised louvres are used to provide positive air control in both ambient and refrigerated cooling systems, since Farm Electronics firmly believe in the benefits of combining the ambient ventilation and refrigeration cooling systems. Fully insulated with overlapping 20mm Polyfoam insulation on the reverse face (to minimise cold bridging) with brush seal strips on the blade ends and unique individually sprung blades to eliminate slack in the drive linkages, the louvres have minimal air leakage. All louvres come complete with a 240v or 24v drive actuator.



## EXAMPLES OF POPULAR COLOURS AVAILABLE

	Black		Goosewing Grey 10-A-05		Olive Green 12-B-25
	White		Mushroom 10-B-11		Moorland Green 12-B-21
	Van Dyke Brown 08-B-29		Merlin Grey 18-B-25		




**FARM  
ELECTRONICS**